

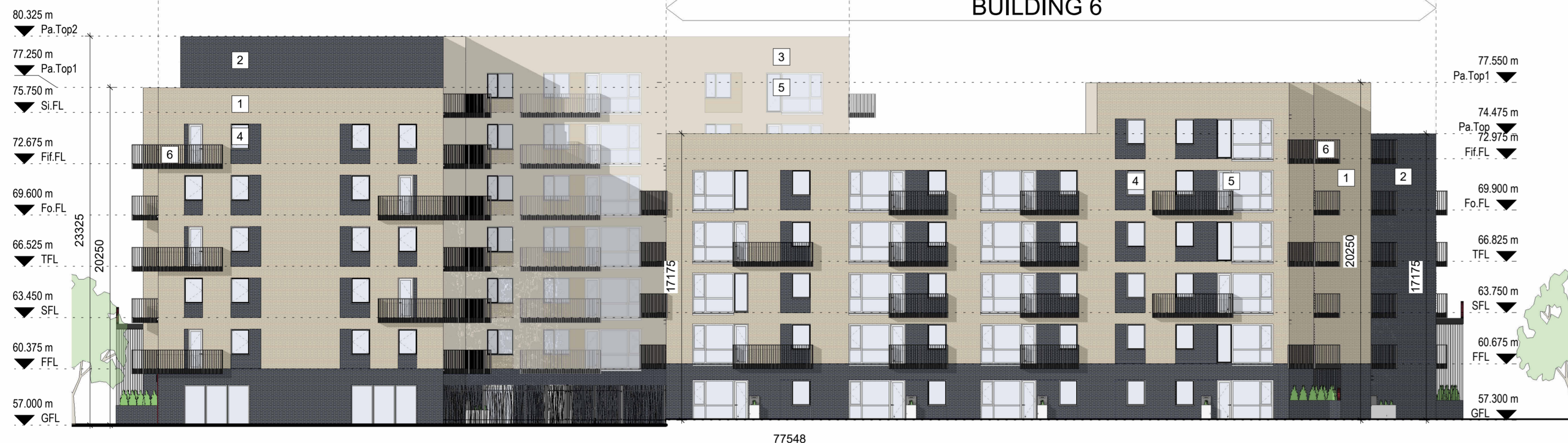
BUILDING 7



4 North East Elevation  
1 : 200

BUILDING 7

BUILDING 6

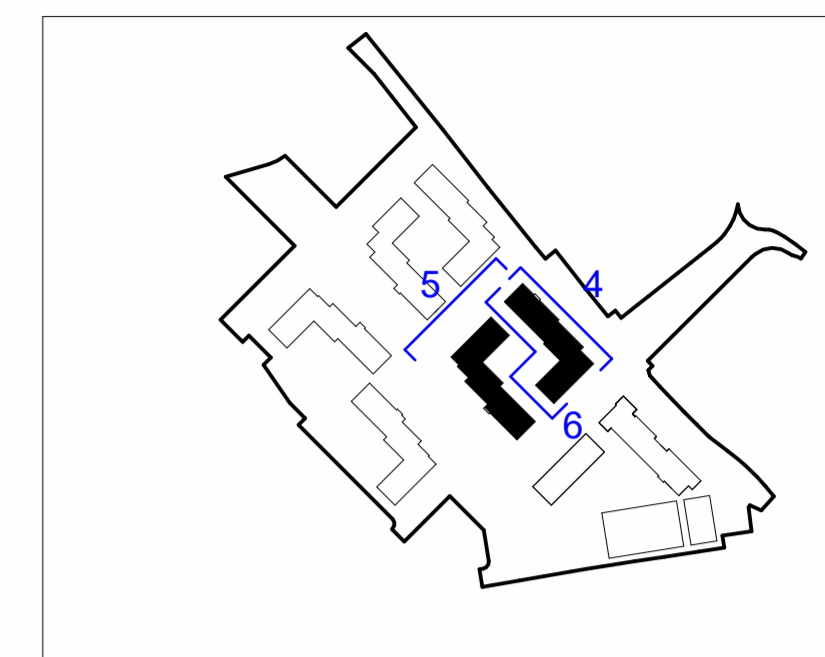
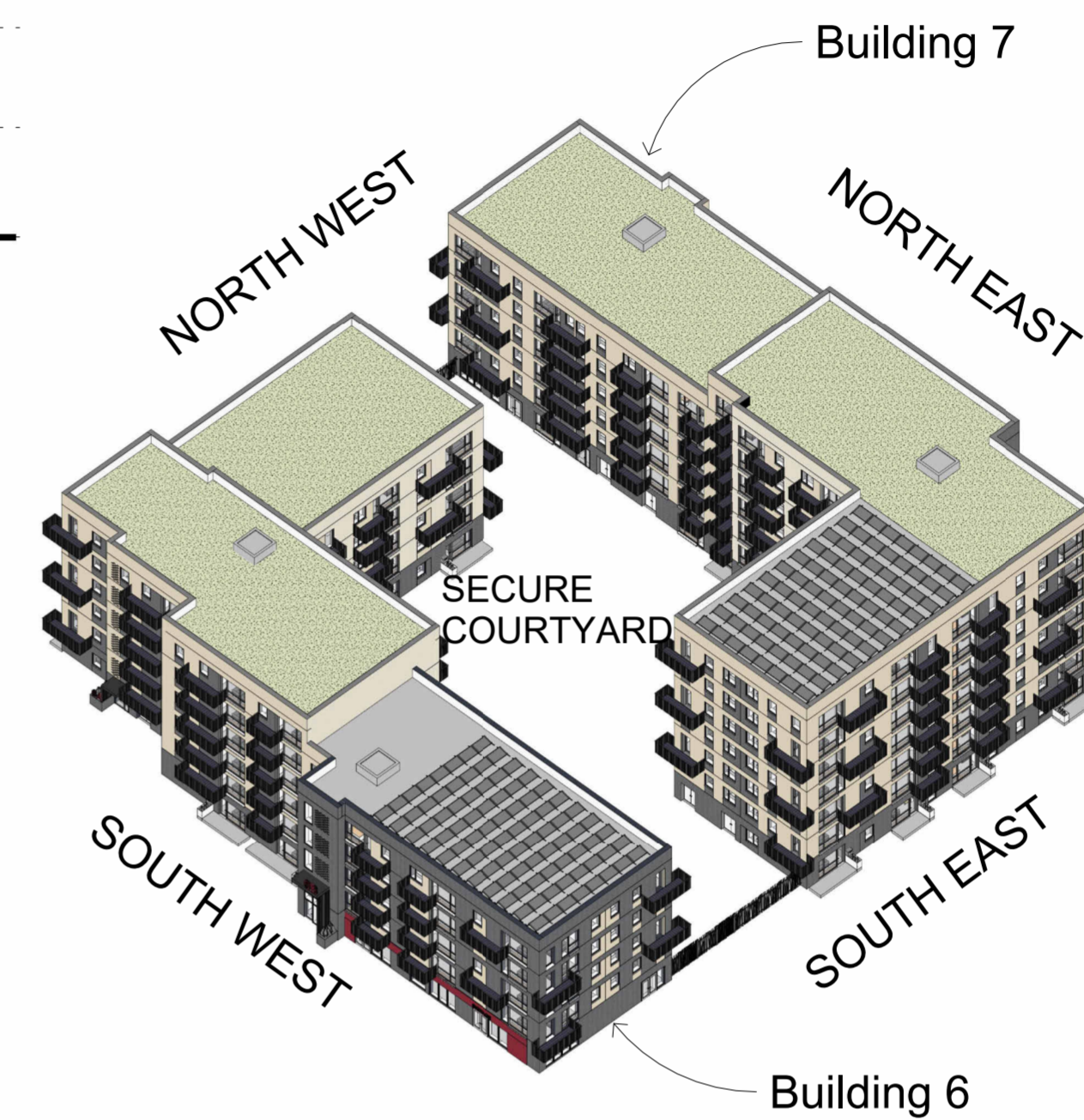


5 North West Elevation  
1 : 200

BUILDING 7

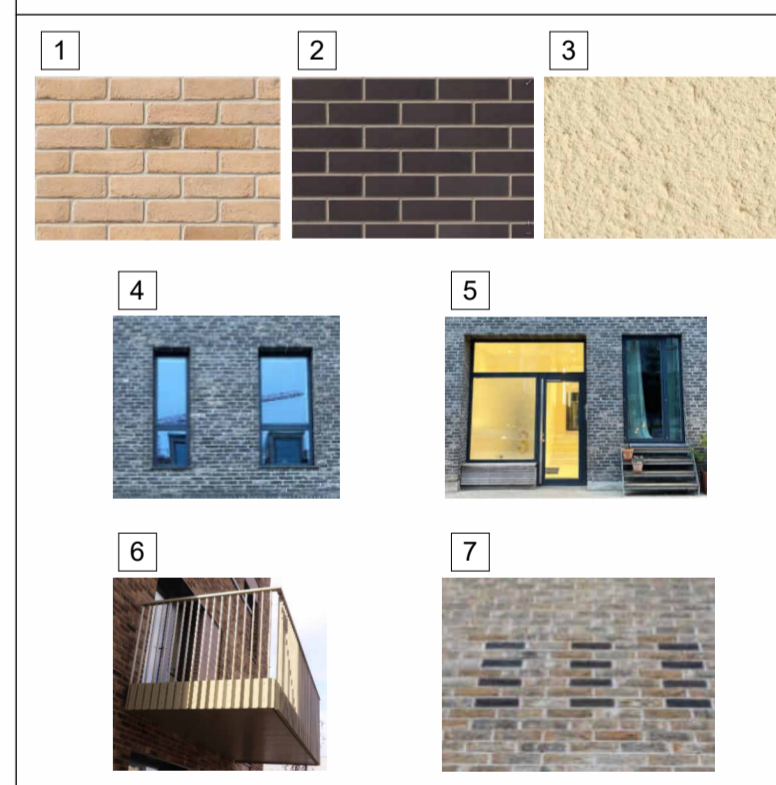


6 South West Courtyard Elevation  
1 : 200



Finishes Key

- 1 **Buff Brick Finish:**  
Buff coloured brick in stretcher bond
- 2 **Black Brick Finish:**  
Black coloured brick in stretcher bond
- 3 **Cement Render Finish:**  
Buff coloured cement render system
- 4 **Windows:**  
Light grey coloured Aluminium or Aluclad window system with integral aluminium cills
- 5 **Doors & Screens:**  
Light grey coloured Aluminium or Aluclad window system with integral aluminium cills
- 6 **Balconies:**  
Light grey coloured polyester powder coated, galvanized mild steel balcony system
- 7 **Coloured Brick Pattern:**  
Feature panels of flush brick detail



REV NR	ISSUED BY	PLANNING APPLICATION	REV. DESCRIPTION	09/06/2023	REV. DATE
A	AO				



In joint venture with  
**CONROY CROWE KELLY**  
Architects & Urban Designers

Drawing Title: **Building 6&7 Elevations Sheet 2**

Scale: As indicated	Drawing Number: 2202-PA-B6&7 -201	Job: Cherry Orchard Point
Revision: A	Issue: A1	Client: LDA
Prepared by: AO	Drawn by: AK	Date: 23/02/2023

All works to be carried out using proper materials which are fit for the use they are intended and for the condition in which they are to be used. All materials used in connection with the works to comply with the Construction Products Regulation (EU) No. 305/2011 and the harmonised technical specifications/standards that fall within the remit of the CPR No. 305/2011. Figured dimensions must be used in preference to scaled dimensions. Any dimensional discrepancies must be reported to the Architect immediately. This drawing remains the copyright of van Dijk Architects. It must not be used for any purpose building or otherwise without the express permission of this practice. Do not copy or redistribute these drawings or any additional information without the expressed approval of van Dijk Architects.